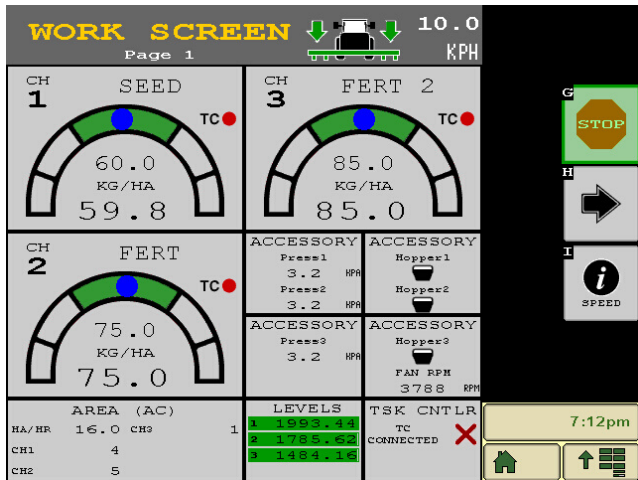
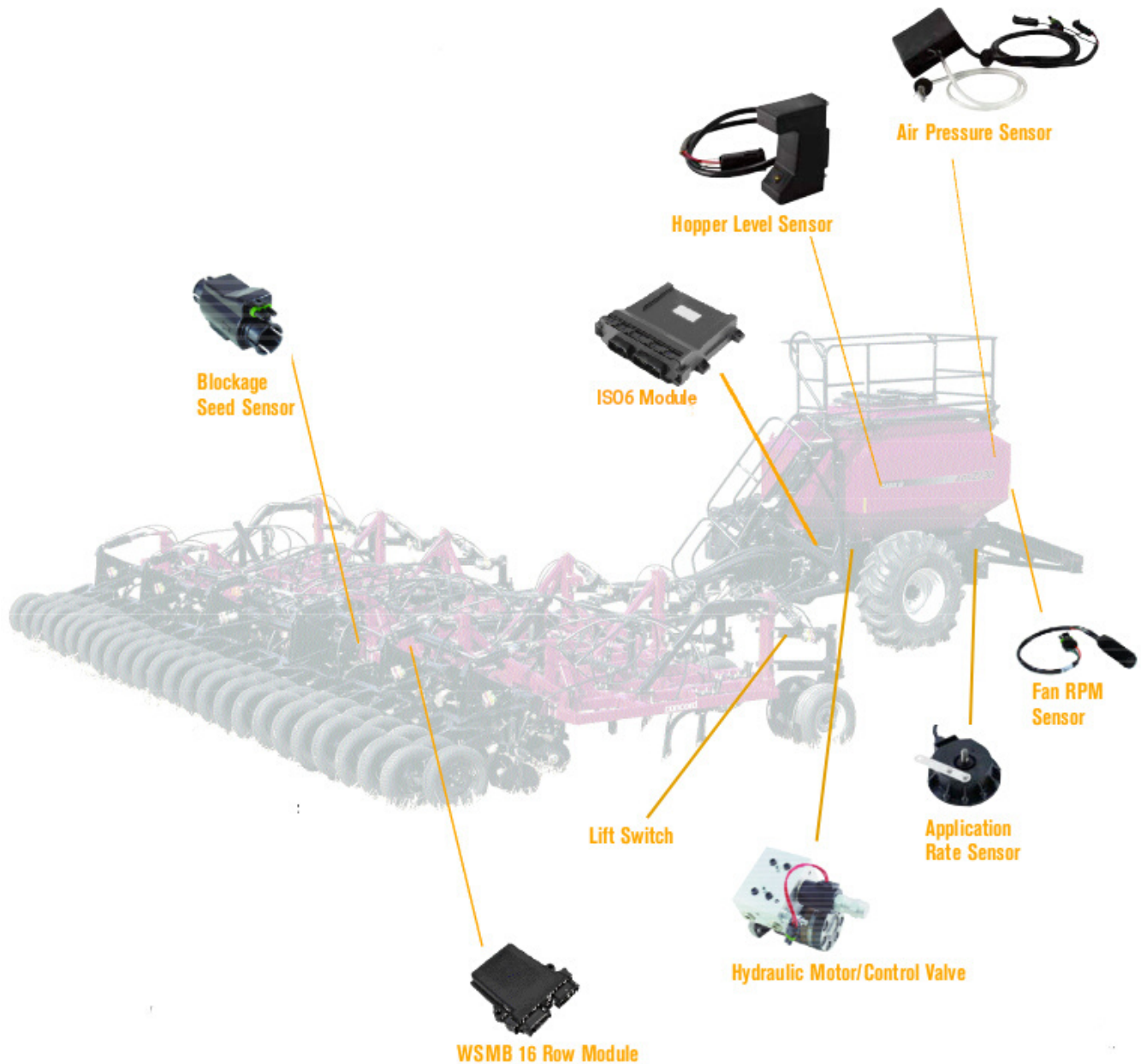


# ISO6 Intelligag System



The ISO6 Intelligag system is the latest 8-channel control system by Dickey-john. Based on the ISO-11783 standard, the system is plug & play through any compatible terminal, allowing use of documentation, section control, prescription maps & boundary shutoff. Various unlocks give the user features like virtual section switches & implement folding, all through the base module.



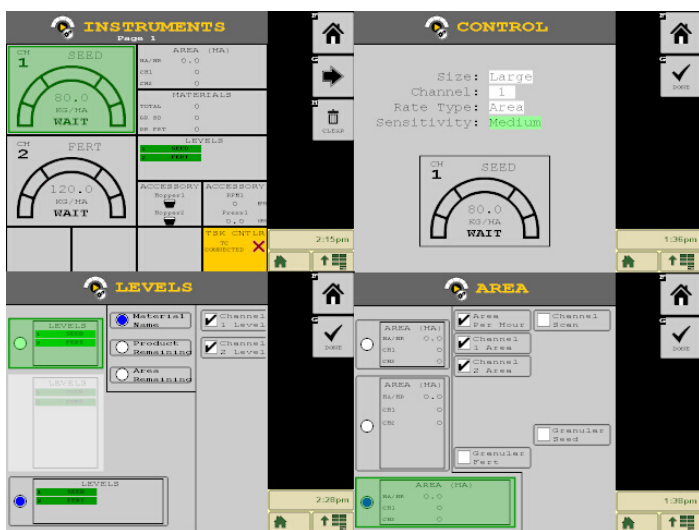
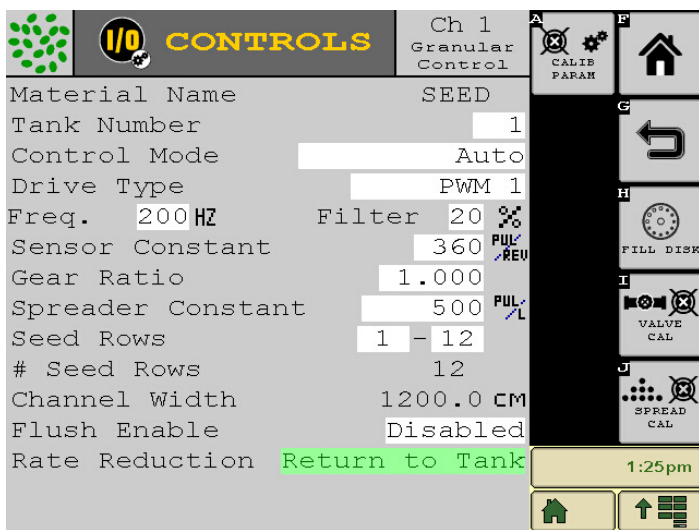


AG ELECTRONICS

5 Manilla St  
East Brisbane Q 4169

P: 07 3391 8766  
F: 07 3891 17611

info@cambut.com.au  
www.cambut.com.au



- 2, 4, 6 or 8 channels of granular or liquid rate control (or monitoring).
- PWM & servo actuator control.
- Automated valve calibrations: 1-button press.
- Up to 16 stored materials for easy changeover between products.
- Preset method allows the user to choose from 10 application rates on the go.
- Display accessory sensors (hopper low level, air pressure, & RPM). Set high/low alarms (with customisable alarm behaviour).
- Blockage/population sensor compatible (up to 196 rows using accessory modules).
- Customisable work screen allows the user to see the information most important to them.
- "Product Level" shows the remaining area coverable by each hopper based on their application rates.

IS06 AIR SEEDER CONTROLLER