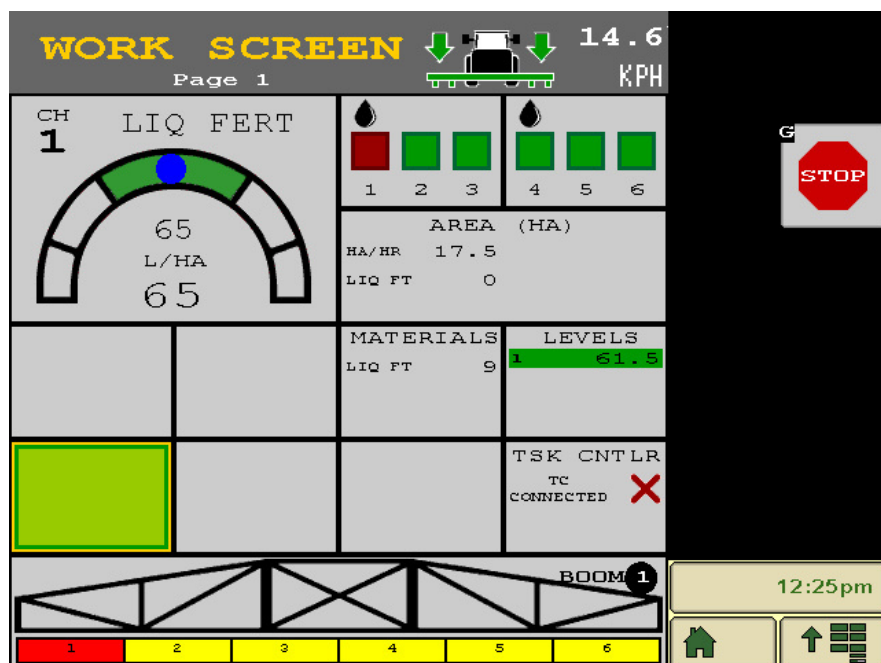
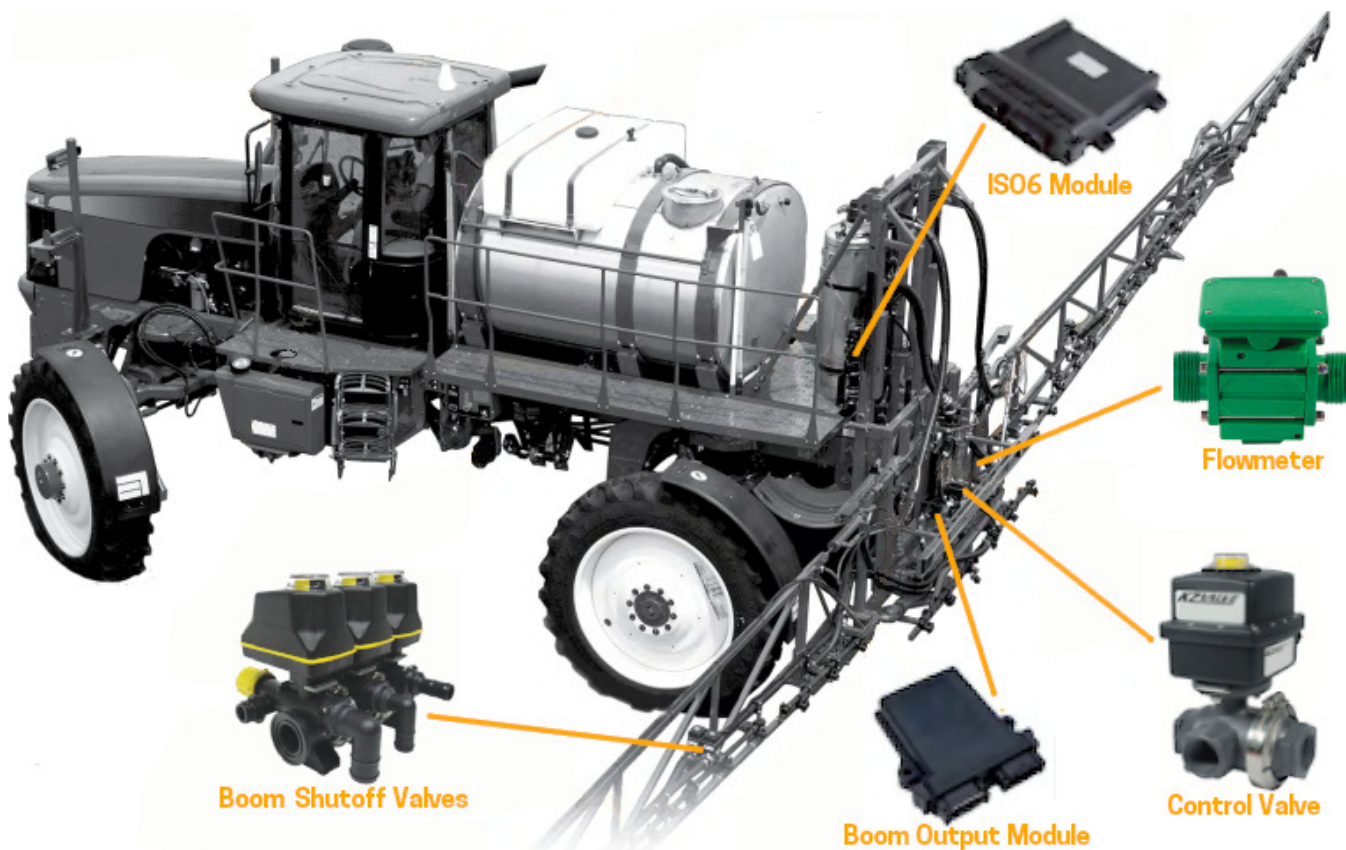


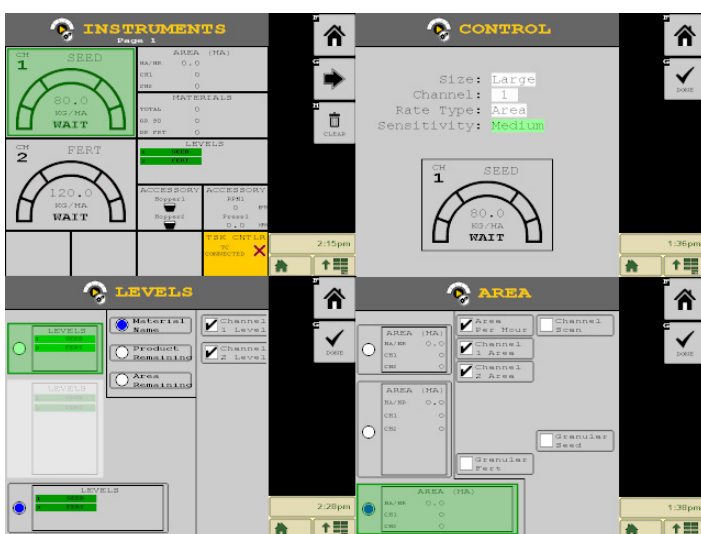
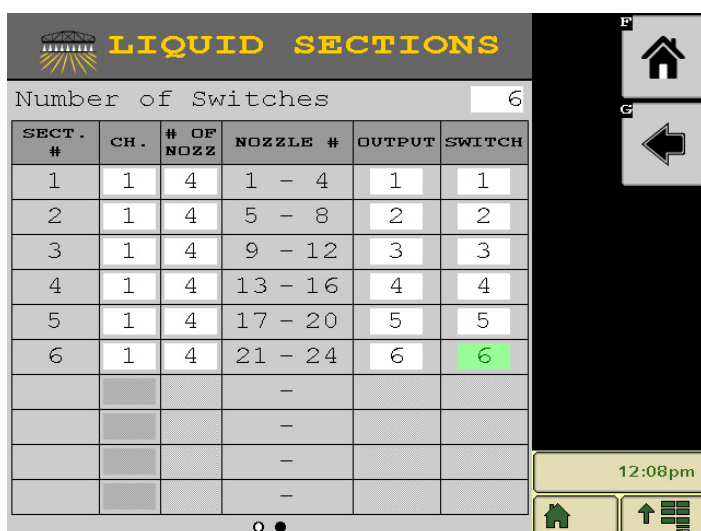
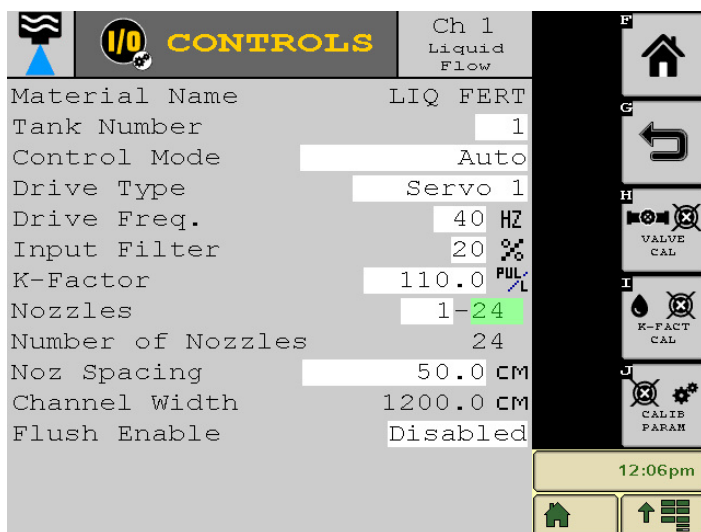
# ISO6 Intelligag System



The ISO6 Intelligag system is the latest 8-channel control system from Dickey-john. Based on the ISO-11783 standard, the system is plug & play through any compatible terminal, allowing use of documentation, section control, prescription maps & boundary shutoff. Various unlocks give the user features including virtual section switches.

**ISO6 LIQUID CONTROLLER**





- 2, 4, 6 or 8 channels of granular or liquid rate control (or monitoring).
- PWM & servo actuator control.
- Automated valve calibrations: 1-button press.
- Up to 16 stored materials for easy changeover between products.
- Control liquid sections with the use of section valves and the Boom Output Module. Virtual Switches unlock allows toggling of the sections through the Work Screen: no additional switch panel required.
- A graphical representation lets you monitor the status of your boom on the Work Screen, allowing you to always know which sections are on or off.
- Customisable work screens (up to 4 screens) allow the user to see the information most important to them.