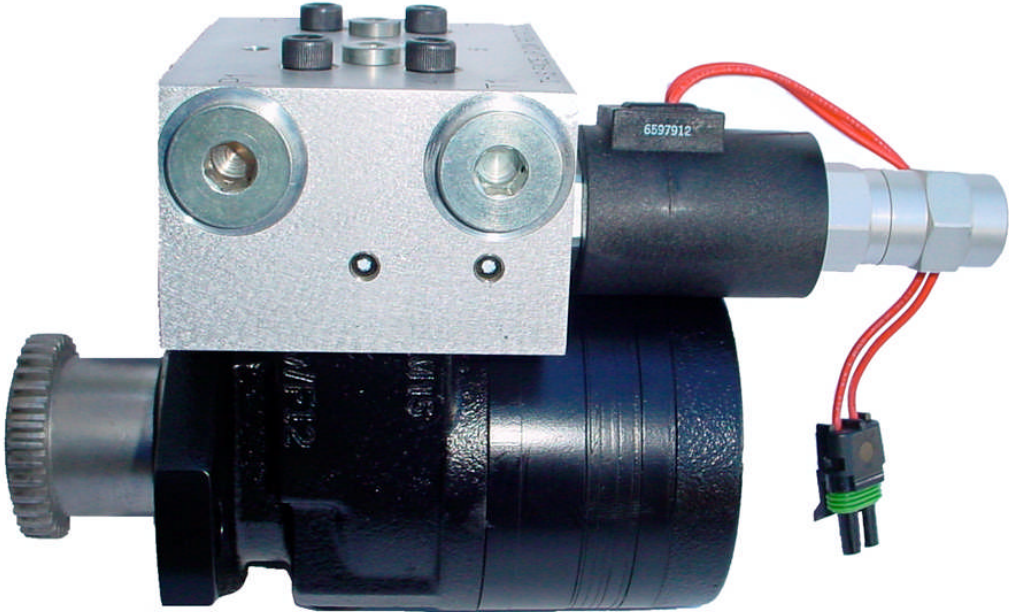
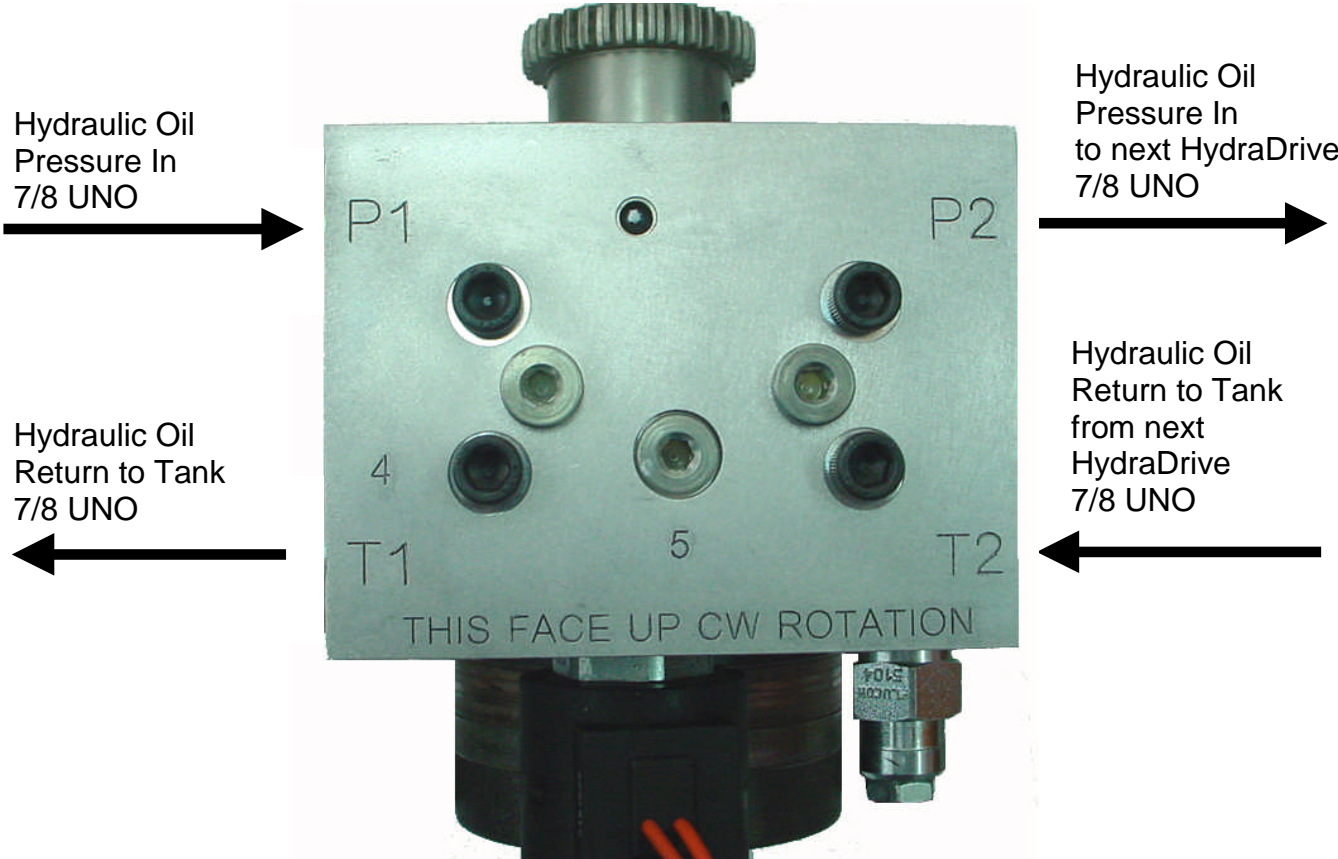


# HydraDrive



### Closed Centre Hydraulic Connections



# HydraDrive

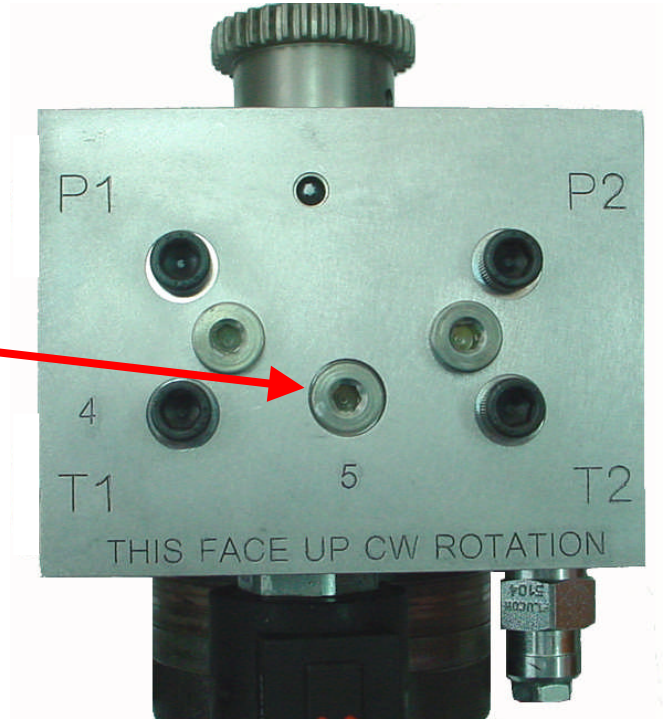
**Cambut Holdings**

5 Manilla Street, P.O.Box 7101  
East Brisbane Queensland 4169  
Phone: 07 3391 8766 Fax: 07 3891 1761  
Email: info@cambut.com.au

## Open Centre Hydraulic Connections

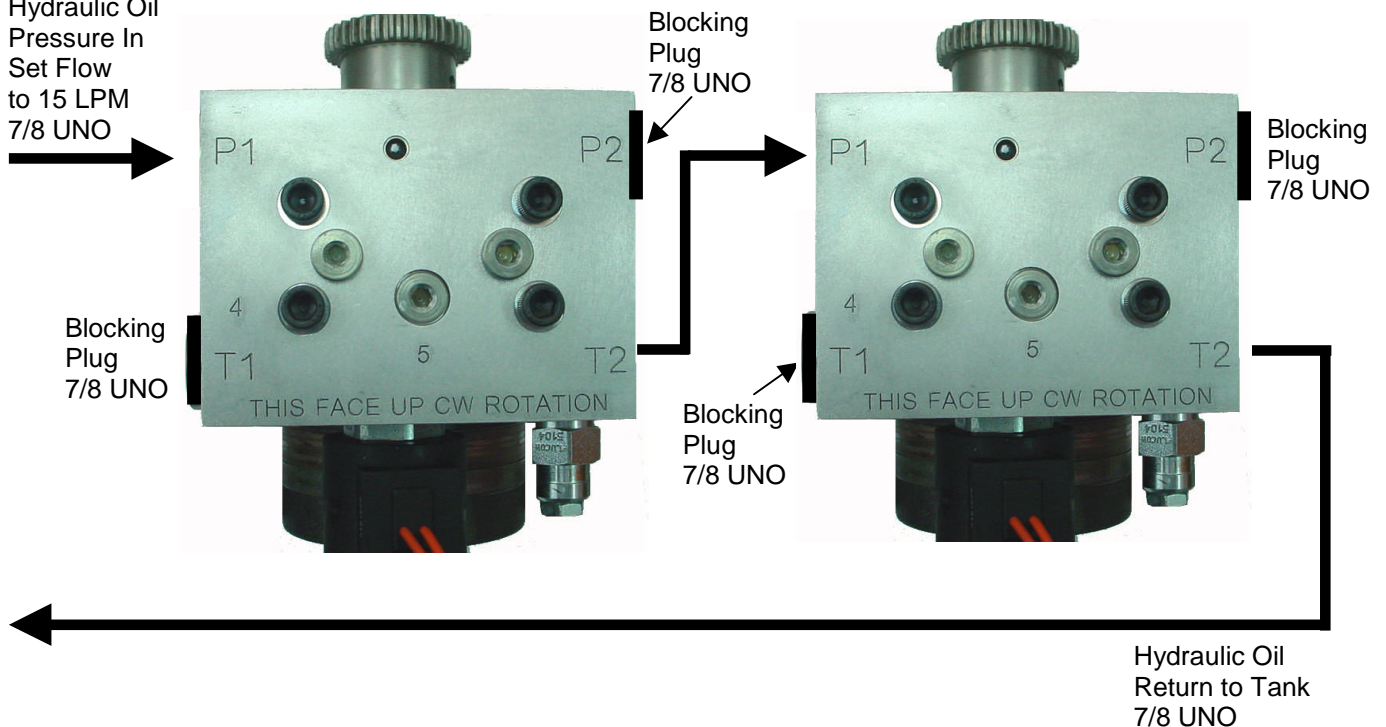
HydraDrive is normally setup for closed centre tractor hydraulics, but it can be configured for open centre tractor hydraulics.

**For Open Centre Hydraulics** configuration remove 5mm hex blocking plug 5. Under this plug you will find a 4mm hex blocking plug that needs to be permanently removed. Then re-install outer blocking plug 5.



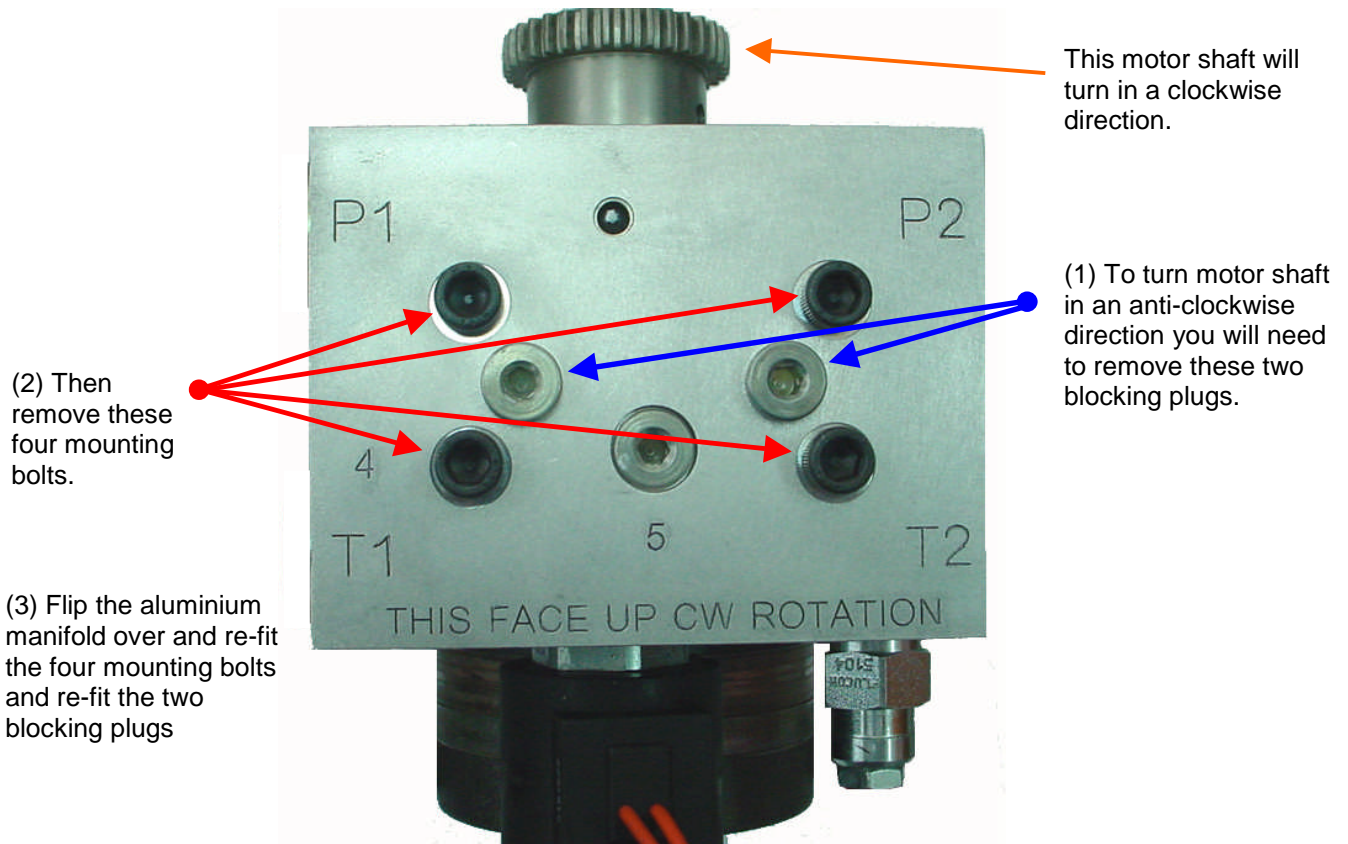
## Open Centre Hydraulic Connections for 2 or more HydraDrive Units

Hydraulic Oil Pressure In Set Flow to 15 LPM 7/8 UNO



*We Think Ahead. We Design To Last.*

### Configure the Turning Direction of the Motor Shaft



### Manual Over-Ride

For manual over-ride of the hydraulic valve, unscrew the protective cap from the valve cartridge. Then turn the red thumbscrew clockwise to a maximum of 4 1/2 turns to fully open the hydraulic valve.

For automatic control of the valve the red thumbscrew MUST be turned fully anti-clockwise until it stops turning.

